

TRISYS

TRISYS CORE

trichology treatment system

A premium treatment that
your hair designer prepares just for you.



Because damage levels and hair problems differ among customers.

If there are 100 customers, they require 100 different treatments.

That's why we want hair designers grasp the customers' hair

damages and problems and then prescribe and

prepare each unique treatment for each customer.

TRISYS CORE is a premium treatment managed

by truly professional hair designers.

Because we want to provide the best results to the important customers.

The results of hair colors and perm styles will become extremely better if combined with TRISYS CORE treatment.

Your important customers will be convinced of your professional capability.

TRISYS CORE will support professional hair designers become even more reliable for their customers.

TRISYS CORE was developed based on trichology. TRISYS CORE repairs hair damage from its core.

TRISYS
TRISYS CORE



A special method, carefully selected ingredients.
This is TRISYSORE quality.

The best result starts from the most suitable PPT blending.

Depending on the customer's damage level and hair type, you can change the amounts and blending ratio of 3 PPTs so that you can control the results.



Show your blending in front of your customer so that she feels "It's my own prescription!".

"4 steps + home haircare" repairs your hair damage from the core.

Each of 4 steps focuses on each specific effect and specific area of hair to work on. You can prolong the restored beauty by a special home haircare.

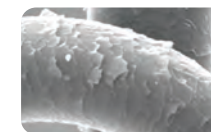
□ 4 step + home haircare



"Fullerene" reduces damage caused by oxidation.

Fullerene, contained in CE Cream, CE Mist, 18S, 18H and CE plus, will protect hair from oxidation caused by color or perm process.

□ Hair damage comparison



damaged hair

1 month after color



TRISYSORE treated hair

1 month after color + TRISYSORE

"Fullerene", an ingredient in the focus of attention is increasingly used in more cosmetics now.

"Fullerene", known to be very effective in absorbing/eliminating free radicals is increasingly used in many skincare

products now. We focused on its potential antioxidative effect on hair and scalp as well as its growth promoting effect on hair.

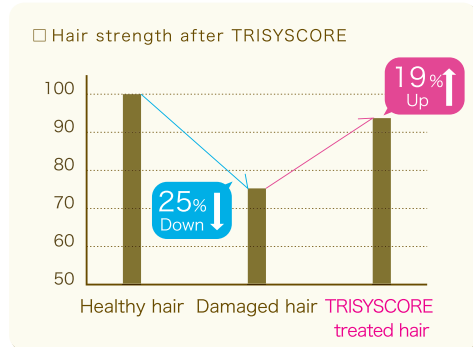


The result is genuinely healthy moist hair.
This is TRISYSCORE quality.

Strength
UP

Strengthens hair from the core by enhancing density of hair interior.

TRISYSCORE fills in damaged porous area with proteins and enhances density of hair interior. Damaged hair will restore strength and suppleness.



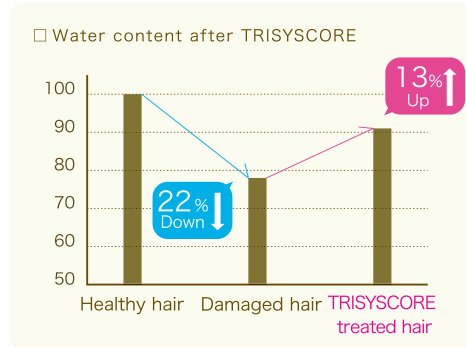
※Comparison with healthy hair as 100.

※Damaged hair: processed color and perm twice.

Moisture
UP

Restores water content to the level close to healthy hair.

TRISYSCORE replenishes proteins and ceramides that are the keys for moisture retention.



Hydrophobicity
UP

Conditions cuticles and makes surface hydrophobic state.



□ Healthy hair
Keeps hydrophobicity and repels water.
Healthy cuticles repels water protecting hair from damaging factors.



□ Damaged hair
Lost hydrophobicity and absorbs water easily.
Cuticles get damaged becoming vulnerable to damaging factors.



□ TRISYSCORE treated hair
Restores hydrophobicity and repels water again.
Repaired cuticles restore healthy hydrophobicity.

TRISYSORE 4-Step Treatment System

1st step



Fills in

PPTs fill in the damage holes in cortex altering the nature of hair from inside.

Blends 3 kinds of PPTs based on hair types.



TRISYSORE KL

Low-molecular Keratin

Low-molecular keratin (M/W: 400) penetrates into micro damage holes. Provides elasticity and builds a base of healthy hair.

TRISYSORE KM

Middle-molecular Keratin

Middle-molecular keratin (M/W: 10000) penetrates into large damage holes. Provides elasticity and strength and will become hydrophobic in acidity.

TRISYSORE CO

Collagen

Collagen (M/W: 2000) provides softness and suppleness to the hair. Possess heat-active property.

- By changing the mixing ratio of 3 PPTs, you can make tailor-made blending for each individual customer.
- Basic blending is 1:1:1 diluted with water to make 30mL solution for medium length hair.
 - ※ You can prepare one blending for roots area and the other for ends area for even more personalized service.

2nd step



Permeates

CMC permeates cortex

to enhance moisture retention and strength.

Choose one from two types depending on what service menu will be done together.



TRISYSORE CE cream

Ceramide 2 + Fullerene

Ceramide 2 will reinforce CMC between cells. Fullerene, said to have 200 times more anti-oxidizing effect than vitamin C, will reduce oxidative stress generated by chemical procedures.

TRISYSORE CE mist

Ceramide 2 + Fullerene

Ceramide 2 will reinforce CMC between cells. Polyphenol (tannic acid) will bind to protein providing hair with body and strength that can resist chemical stressors.

- CMC permeates cortex and between cuticles. CE makes preceding PPT solution hydrophobic (solid state) having it stay firmly inside of hair.
- Massage hair well to have CE penetrate into hair (and you see water emerges). (The more hair is damaged, the more water comes out.)

3rd step



Wraps

KH conditions and wraps damaged cuticles and prevents repairing ingredients from flowing out.

KH



Cuticle surface coating

TRISYSORE KH

High-molecular Keratin

Hydrophobic high-molecular keratin (M/W: 30000) and lecithin synergistically work to wrap inside and surface of hair and to condition cuticles.

- The effect will be further enhanced by applying blow-dryer's heat after KH is applied.

4th step



Makes hydrophobic

Supplies hair surface with 18-MEA that enhances hair's hydrophobicity and maintains sleekness.

Choose one from two types depending on hair texture type.

18S

18H



To soft fine hair

TRISYSORE 18S

18-MEA + Fullerene

It makes up for decreased 18-MEA existing in the outer layer of cuticles. Cationized chitosan brings light-sleek finish.



To coarse thick hair

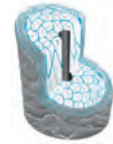
TRISYSORE 18H

18-MEA + Fullerene

It makes up for decreased 18-MEA existing in the outer layer of cuticles. Protasil® brings moist-feel finish.

- Choose 18S to fine hair and 18H to coarse hair.
- Vegetable oils such as jojoba oil, macadamia nut oil and rose hip oil will bring supple and smooth finish to the hair surface.

home haircare



Replenishes

CE+ makes up for decreasing ceramide and maintains beauty and strength of the hair.

CE+

Ceramide replenishment

1 box for 4 week use



TRISYSORE CE plus

Ceramide 2 + Fullerene

It makes up for decreased ceramide and maintains water content of the hair. Your customer can keep healthy hair condition until her next salon visit.

□ How to:

1. Divide hair in two parts after shampooing. Apply CE plus to each part by massaging and blending in to the hair.
2. Pinch the hair between fingers and slide fingers several times as if fingers press the cream into the hair.
3. Rinse off emerged water and excess cream completely, apply hair treatment and rinse.



Basic Process

Basic treatment menu that customers can directly feel the improvement of hair quality.

□ Proposing TRISYSORE

□ Care of inner hair

Explains the benefits of TRISYSORE in plain words.



Approach talk

- Would you like to try professional treatment that solves hair problems while repairing damages?
- This is a tailor-made treatment that you can easily feel the improvement.
 - (If the customer has fine hair,) "It can create soft volume to your hair."
 - (If the customer has coarse hair,) "It can make your hair soft and manageable."
- It brings moist feel up through hair ends and you can feel hair damage disappeared.
- We have special home haircare treatment to maintain the salon treatment effect very long (up to 1.5-2 months).

1

Counseling / Plain rinse.



Ask customer about her chemical process history and hair problems. See her hair and judge the damage level. Plain rinse and towel dry very well.

- When did you get your hair colored and permed?
- Do you have any problem about your hair texture or damage?

2

Apply blended PPTs.



KL KM CO



Prepare about 30mL of PPT blended solution. Take slices and apply it to each slice by massaging and blending in to the hair.

Refer to the right page for "PPT blending ratios".

- The first step is to blend keratin and collagen.
- This blended solution will fill in the damage holes.

3

Apply CE cream by hands.



CEc



Apply about 20g (7 pumps) of CE cream to the hair. Pinch the hair between fingers and slide fingers down several times as if fingers press the cream into the hair. (Then water will emerge from hair.)

- This cream contains "ceramide" which creates water paths in the hair.
- I am taking excess water out so that treatment ingredients can more easily penetrate into damaged areas.

4

Plain rinse and Towel dry.



Rinse cream out completely until you start feeling squeaky-clean touch. This is a sign that CMC got inside.

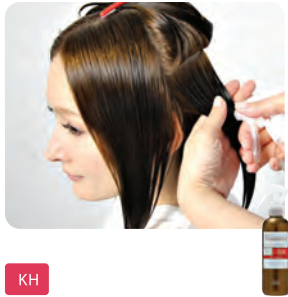
- When you take color or perm service, please combine this treatment that can greatly reduce chemical damages.
- You will feel the difference to the touch today because of this special treatment.
- You can expect the good end result.

□ Care of outer hair and cuticles

□ Home haircare

5

Apply KH.



Divide whole hair into 10 sections and spray KH 1-1.5 times to (middle to end of) each section. (Total 10-15 times.) Too much application may cause sticky result.

- This is a repairing protein spray.
- It effectively repairs damaged cuticles.

6

Apply 18S or 18H.



Choose either 18S or 18H depending on the customer's hair type.
 □ Fine hair : 18S □ Coarse hair : 18H
 Apply about 20g (7 pumps) of cream to the hair using a brush. Comb the hair to blend in. Plain rinse and finish.

- This cream will create a water-shedding coat to the outer cuticles.
- The naturally-derived ingredient will create glossy shine.

7

Have your customer take "CE plus" home.



Please explain the importance of home haircare and the usage of CE plus to the customer and have her take CE plus home.

- Please use this CE plus once a week.
- It contains "ceramide" that will prolong today's treatment effect.
- I wish you can maintain the beautiful hair until your next visit to us.

PPT blending ratios



□ Basic blending
 (for medium-length hair)

	KL•KM•CO	Water	Total
Light~Middle Damage	3 pumps each (Total 9mL)	21mL	Total Solution 30mL
Middle~High Damage	4 pumps each (Total 12mL)	18mL	

□ Additional blending (for improving hair texture)
 (for medium-length hair)

	KM or CO
for "Body"	Add 4-8 pumps of KM to the 30mL solution.
for "Softness"	Add 4-8 pumps of CO to the 30mL solution.



Combining with chemical menu
for better result and less damage.

Color/Perm + TRISYSCORE for healthy result.

Chemical menu such as color or perm can be combined with TRISYSCORE for better result. High-quality hair design with

shiny moisture-rich hair quality can be achieved even on damaged dry hair.

	Color x TRISYSCORE			Perm x TRISYSCORE		
	< on 9 level hair, used copper shade >			< on 9 level hair, used Cys-Thio perm >		
	No pre-treatment	Normal PPT pre-treatment	TRISYSCORE	No pre-treatment	Normal PPT pre-treatment	TRISYSCORE
3 days later						
	↓	↓	↓	↓	↓	↓
1 month later						
	dry, damaged and discolored	dry, damaged and somewhat discolored	less damaged and less discolored	dry, damaged and lost curls	curls remain but dry and damaged	curls remain and less dry

6 Combination Menus

Introducing 6 combination menus with various chemical services

TRISYSCORE Combination Menu

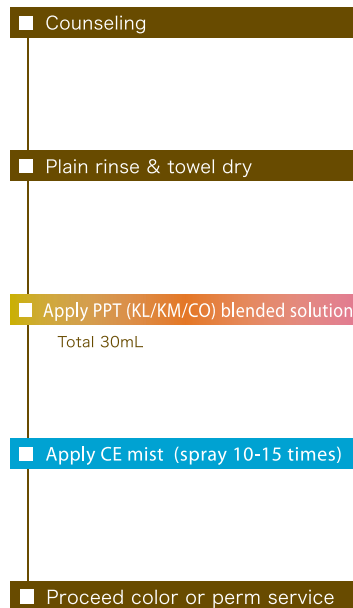
- 1 Quick pre-treatment
- 2 with Color
- 3 with CMC emulsifying for color
- 4 with Perm
- 5 with Straightening perm
- 6 with Creep cosme perm

1

Quick pre-treatment

Pre-treatment menu for color or perm

By conducting TRISYSORE pre-treatment before chemical menu such as color or perm, you can reduce the chemical damage to the hair and can expect better result (even color or even curls).
 ※This is a "cortex care" pre-treatment menu.

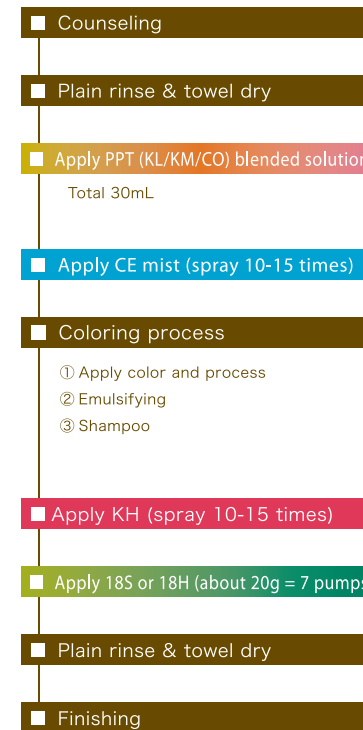


2

with Color

Combination menu with color for healthy shiny result

Reduces damage caused by coloring.
 Conditions surface of cuticles, prevents color from fading-out and prolongs color retention.



3

with CMC emulsifying for color

Combination menu with CMC emulsifying for better coloration and moisture-rich quality.

Emulsifying process using CMC is very effective to supply moisture to the hair that is right-after-colored and is vulnerable to damage. It also enhances better coloration.

- Counseling
- Coloring process
- CE cream (6-9g = 2-3 pumps) or CE mist (spray 10-15 times)
 - Apply CE cream or CE mist in a shampoo basin filled with warm water.
 - CE cream:
 - Put CE cream in warm water, dissolve it and pour the water over hair.
 - CE mist:
 - Apply CE mist directly to the hair and pour the filled water over hair.
 - Massage hair and scalp and emulsify the color cream.
- Shampoo
- Apply KH (spray 10-15 times)
- Apply 18S or 18H (about 20g = 7 pumps)
- Plain rinse & towel dry
- Finishing

4

with Perm

Combination menu with perm for soft and moist-feel result

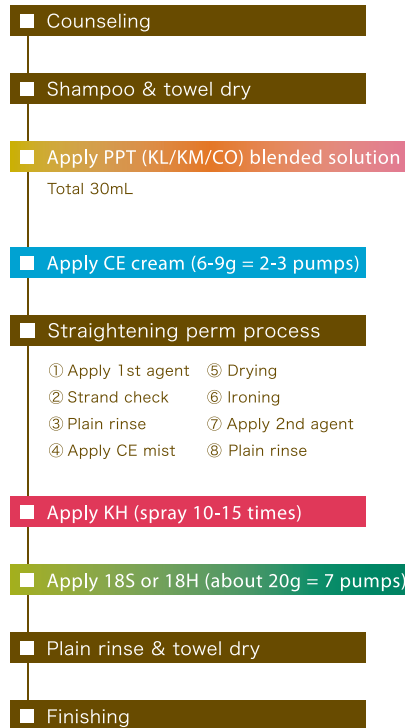
Reduces damage caused by perming. Reduces dryness and spreading of hair ends and creates beautiful moist-rich curls.

- Counseling
- Shampoo & towel dry
- Apply PPT (KL/KM/CO) blended solution
 - Total 30mL
- Apply CE mist (spray 10-15 times)
- Perming process
 - ① Winding
 - ② Apply 1st agent (interim rinse later)
 - ③ Apply CE mist
 - ④ Apply 2nd agent
 - ⑤ Remove perming rods
 - ⑥ Plain rinse
- Apply KH (spray 10-15 times)
- Apply 18S or 18H (about 20g = 7 pumps)
- Plain rinse & towel dry
- Finishing

with Straightening perm

Combination menu with straightening perm for natural result

Reduces damage caused by straightening perm.
Creates natural shiny straight line up through hair ends.



with Creep cosme perm

Combination menu with creep cosme perm for soft, clear and bouncy curls.

Creates quality curls with softness and bouncy feel.
Minimizes damage and improves curl retention.



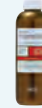
TRISYSORE LINEUP



- TRISYSORE KL 150mL
- TRISYSORE KM 150mL
- TRISYSORE CO 150mL
- 1mL Pump Nozzle



- TRISYSORE CE mist 200mL
- Spray Nozzle
- TRISYSORE CE cream 500g
- Empty Bottle for CE cream



- TRISYSORE KH 200mL
- Spray Nozzle



- TRISYSORE 18S 500g
- Empty Bottle for 18S
- TRISYSORE 18H 500g
- Empty Bottle for 18H



- TRISYSORE CE plus 12g x 4



- Mixing Sprayer (for PPT blending)



- Water Applicator (for PPT blending)

TRISYSORE Starting Kit

A kit includes



- | | |
|--|--|
| <input type="checkbox"/> TRISYSORE KL 150mL x 1 | <input type="checkbox"/> TRISYSORE CE mist 200mL x 1 |
| <input type="checkbox"/> TRISYSORE KM 150mL x 1 | <input type="checkbox"/> TRISYSORE KH 200mL x 1 |
| <input type="checkbox"/> TRISYSORE CO 150mL x 1 | <input type="checkbox"/> TRISYSORE 18S 500g x 1 |
| <input type="checkbox"/> TRISYSORE CE cream 500g x 1 | <input type="checkbox"/> TRISYSORE 18H 500g x 1 |



- | |
|--|
| <input type="checkbox"/> Blending Stage x 1 |
| <input type="checkbox"/> Empty Bottle for CE cream x 1 |
| <input type="checkbox"/> Empty Bottle for 18S x 1 |
| <input type="checkbox"/> Empty Bottle for 18H x 1 |



- | |
|---|
| <input type="checkbox"/> Water Applicator x 1 |
| <input type="checkbox"/> Mixing Sprayer x 1 |
| <input type="checkbox"/> 1mL Pump Nozzle x 3 |
| <input type="checkbox"/> Spray Nozzle x 2 |

Now & Future.

For lovely glamorous hair, for always.

For all women who aspire one step higher beauty.
A haircare line that goes one step ahead.

Muriem

< Gold >



Muriem Shampoo V / F / H
250mL, 660mL, 500mL (refill pouch)

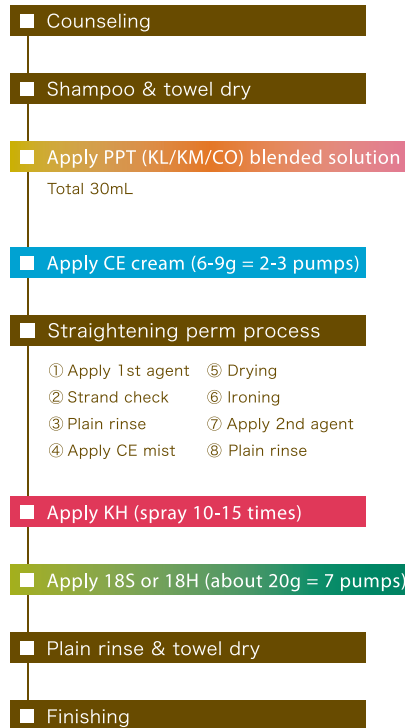
Muriem Treatment V / F / H
200g, 620g, 500g (refill pouch)

Muriem Triphilia 120mL
Muriem Renew Oil 120mL
Muriem Moist Infusion 120mL

with Straightening perm

Combination menu with straightening perm for natural result

Reduces damage caused by straightening perm.
Creates natural shiny straight line up through hair ends.



with Creep cosme perm

Combination menu with creep cosme perm for soft, clear and bouncy curls.

Creates quality curls with softness and bouncy feel.
Minimizes damage and improves curl retention.



003

NUMBER THREE

NUMBER THREE, INC.

7-1-27 Minatojima-Minamimachi, Chuo-Ku, Kobe, Hyogo 650-0047

<http://www.no3.co.jp>

Kobe, Tokyo, Sapporo, Nagoya, Fukuoka